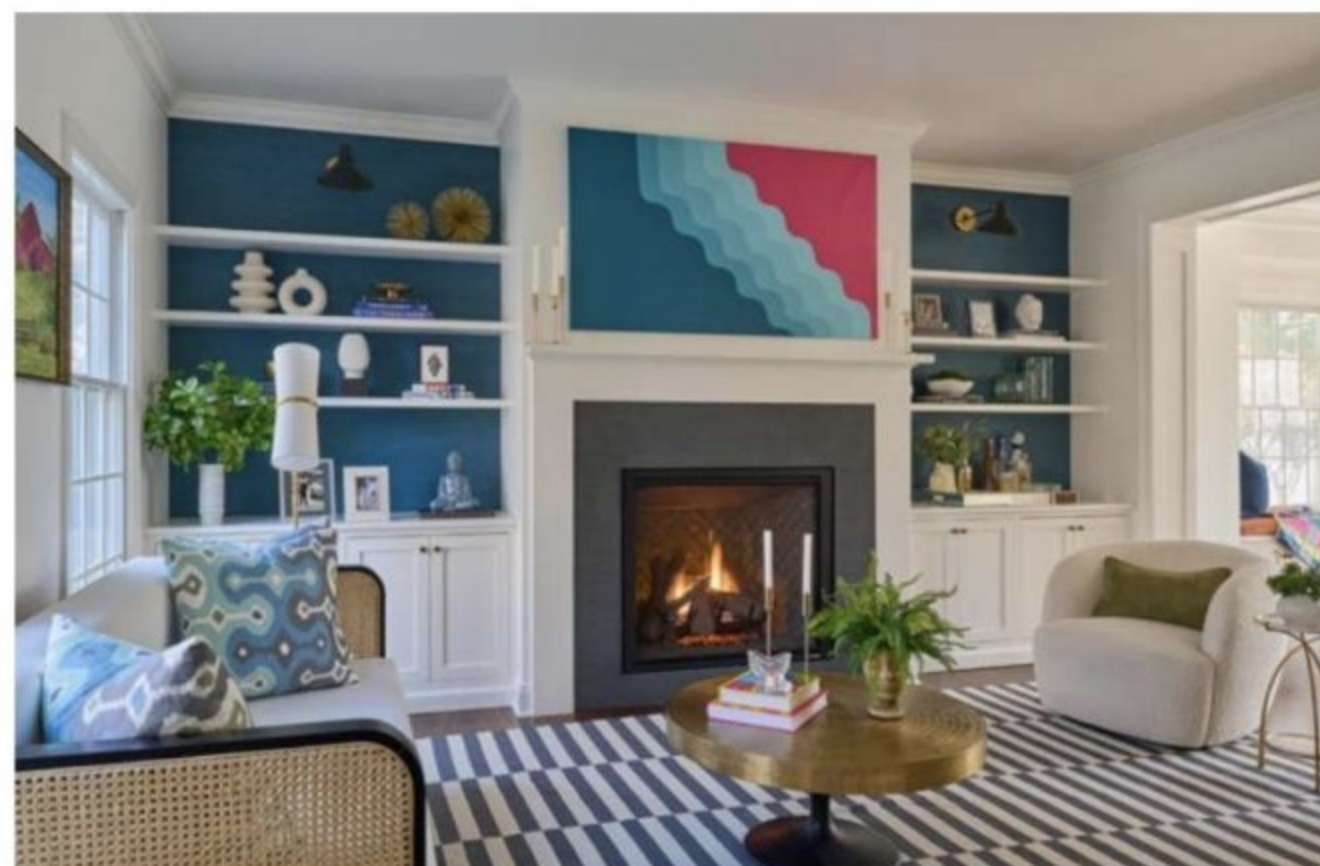




MOSS DESIGN - Southport, Ct.
www.mossdesignct.com

Have you ever designed an entire room around a single piece of art?

Yes, we often do and for this project we took that one step further and had a painting commissioned that was inspired by our design for this room. As collectors ourselves, we consider art from the beginning of the project. As it is so personal, we work with a trusted art advisor, Betsy Biscone, to ensure that our clients' find pieces that truly speak to them. As in this case, we'll even help them commission a custom piece in collaboration with our favorite artists. The abstract painting hanging above the mantle by F. Renew compliments the color and movement of the room in a subtle, albeit emotional way.



MARE DESIGN - Greenwich, Ct.
maredesigngreenwich.com

*How would someone be able to tell the design was yours?
What makes your style significantly you?*

Mare Design projects are known for being serene and understated, yet luxurious. It is my signature approach to design rooms that are not only beautiful but literally feel good to be in. For me, it's all about how it feels to be in it, not just what it looks like. Texture and quality are my first consideration, as the feel of a textile truly has the power to elevate the every day. Perhaps it is my Norwegian background that makes me appreciate the cozy quality of a home so much, especially in the colder months. Layering neutrals on neutrals further heightens the luxe material quality of everything from a silk rug to wool window panels.



JERMAR DESIGNS
New Canaan, Ct.
jermardesigns.com

How do you make guests feel welcomed when visiting?

A chic bathroom for the guest is so important in making a guest feel welcomed and at home. I love to design the bath with a sleek, hotel vibe. Black and white is a fabulous color combo for a guest bathroom as it makes a statement, yet also feels clean and refined. In design it's in the details, so fresh cut flowers and luxury toiletries go a long way in making guests feel pampered. Fabulous art is the finishing touch that elevates any room, even a guest bathroom, to the next level.



CLAUDIA JOSEPHINE DESIGN - Charlotte, NC
www.claudiajosephinedesign.com

What was your biggest blunder?

My husband and I built our custom home in my "pre-designer" days—when I was still a psychologist and hadn't yet received any formal training in interior design. We were building a French Provincial style home and I longed for blue shutters, reminiscent of those timeless grand homes of Provence. Our European-influenced neighborhood is a sea of neutral tones and has a very strict HOA. I had to petition to the board for blue shutters, even driving around with the architect to discuss color palettes and the importance of blue shutters in my design. My husband and I tested numerous blues and finally landed on a tasteful blue gray from Benjamin Moore. I specified the color to our painter, insisting that he only use Benjamin Moore paint as color matches across brands are frequently off due to differences in bases and pigments.

One day, after picking up our preschooler from school, I drove to the worksite to check on our home's progress. As I turned the corner of our street, I gasped when I saw our home's shutters in a blue that could only be described as day-glo. I frantically compared my color chip to one of the shutters and saw that the color was not correct. I called the painter, only to have him assure me that he had used the correct Benjamin Moore paint. Not convinced, I found the paint cans in the garage and discovered that he had color-matched the paint color in a different brand! Needless to say, he was responsible for repainting all the shutters and window boxes to my current elegant, French inspired, blue shutters. While not my error, it was a good lesson to learn that sometimes, to cut costs or for convenience, painters will suggest color matching in cheaper brands of paint. It works sometimes but when it's off, it can be truly unfortunate. Don't color match if you can help it!

